

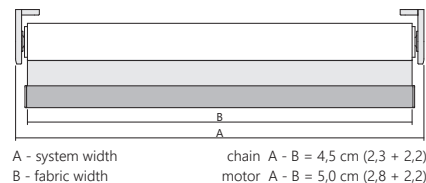
Boundary dimensions for fabric with thickness below 0,35 mm					Boundary dimensions for fabric with thickness over 0,35 mm					System colours			
Controls	MIN	MAX	M	m ²	Controls	MIN	MAX	M	m ²	(P)	(K)	(U)	
Chain	50	280	300	6,0	Chain	50	280	250	4,5	white	black	grey	anthracite
Chain (Loopless)	50	280	300	3,0	Chain (Loopless)	50	280	250	3,0	white		anodized	
Motor DC ø38/ø42*/ø50*	46	220/280*	300	6,5/9,0*	Motor DC ø38/ø42*/ø50*	46	200/280*	250	5,0/7,0*			stainless steel	
Motor AC	54	280	300	9,0	Motor AC	54	280	250	7,0				

Tube ø50 > 200 cm width

* only Coulisse CM-05, Torro AM35EB RF

Tube ø50 > 200 cm width

System dimensions



Price in the table includes blind with chain control, installation profile in one of colours (P) with bottom bar type D3 or D4, mechanism and bracket covers are plastic.

The recommended maximum width for duolight roller blinds is 220 cm. Over this width there may be problems with equal closing of the strips.

Motors AC

Type	T [Nm]	rpm	wt [kg]	min. width	power supply
Torro AM35	6	28	21	55	0,49 A 230 V
Torro AM35Q	3	28	10	57	0,49 A 230 V
Torro AM35QMEL RF	3	28	10	57	0,38 A 230 V
Torro AM35QMEL RF	3	28	10	57	0,38 A 230 V
Somfy Sonesse 40	3	30	10	54	0,55 A 230 V
Somfy Sonesse 40 RTS	3	30	10	58	0,55 A 230 V
Somfy Screen Up	4,5	30	16	55	0,52 A 230 V

* Motor version without RJ plug.

Motors DC

Type	T [Nm]	rpm	wt [kg]	min. width	power supply
Torro AM35EB RF	6	18	21	85	1,5 A 16,8 V
Somfy Sonesse 30 RTS	2	28	9	46	0,8 A 24 V
Somfy Sonesse 30 WF RTS	2	28	9	69	1,5 A 12 V
Coulisse CM-03	1,1	28	4	55	1,8 A 5 V
Coulisse CM-05	2	28	7	73	2,9 A 5 V

* Power supply options - see „Additional accessories“.

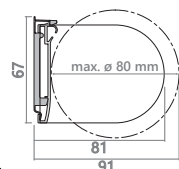
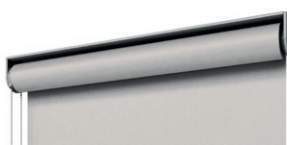
** Motor not available in cassette version.

Versions

standard

Installation profile

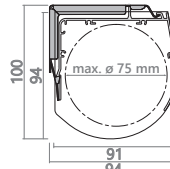
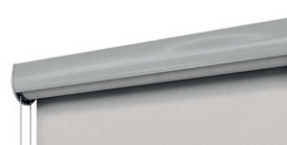
Dimensions



Roller blind is delivered with brackets attached to the installation profile.
Installation profile is available only in colours (P).

Semi-cassette

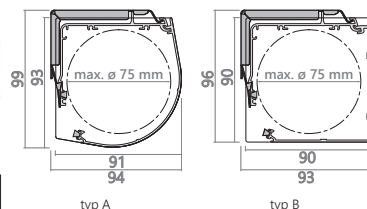
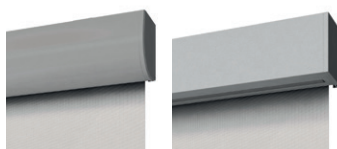
Dimensions



Roller blind is delivered in semi-cassette that partly covers tube with fabric.
Semi-cassette is available only in colours (P).
Version offered with surcharge.

Cassette

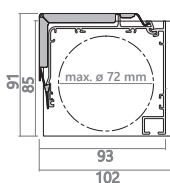
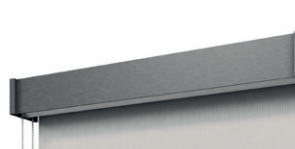
Dimensions



Roller blind is delivered in cassette that completely covers tube with fabric.
Cassette is available only in colours (K).
Version offered with surcharge.

Ultimate

Dimensions



Roller blind is equipped with decoration valance and cheeks, made of stainless steel.
Ultimate version is available only in colours (U).
Version offered with surcharge.

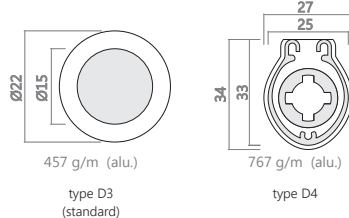
Brackets



installation profile

semi-cassette
cassette
ultimate

Bottom bar

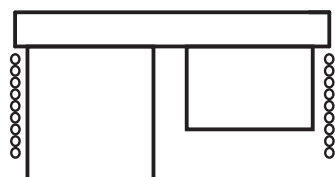


Loopless control



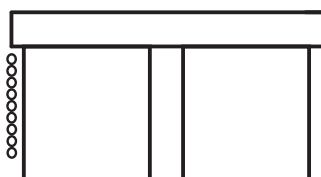
The roller blind movement is done by pulling on one of the two chains.
This option is not available with the „Cassette“ version.
Chain mechanism is available only in colours (P).
Option offered with surcharge.

Duo-Link



Total price is sum of two individual blinds.
Option is not available with installation profile.

Multi-Link



Total price is the sum of prices of individual blinds.
In Multi-Link the distance between fabrics is about 1,8 cm. When using system of height adjustment of roller blinds the distance between fabrics increases up to about 2,7 cm.
Option is not available with installation profile.

Boundary dimensions Multi-Link

Controls	fabric below 230 g/m ²				fabric over 230 g/m ²			
	2 blinds		3 blinds		2 blinds		3 blinds	
	MAX	m ²	MAX	m ²	MAX	m ²	MAX	m ²
Chain	560	7,5	580	7,5	560	6,0	580	6,0
Motor DC	440	10,0	580	18,0	400	8,0	580	7,0
Motor AC	560	15,0	580	20,0	560	9,0	580	9,0

* The possibility to produce roller blind with bigger dimensions is possible after consultation.